



CURA System

22 March 2017

Leigh White

Executive Vice President
CurAegis Technologies

CAUTION CONCERNING FORWARD-LOOKING STATEMENTS.

This presentation contains forward-looking statements within the meaning of the Private Securities Litigation Reform Act of 1995. These statements are based on management's current expectations or beliefs, and are subject to uncertainty and changes in circumstances. Actual results may vary materially from those expressed or implied by the statements herein due to changes in economic, business, competitive, technological, strategic and/or regulatory factors and other factors affecting the operation of CurAegis' businesses. More detailed information about these factors may be found in filings by CurAegis with the Securities and Exchange Commission, including its most recent Annual Report on Form 10-K and subsequent Quarterly Reports on Form 10-Q. CurAegis is under no obligation to, and expressly disclaims any such obligation to, update or alter its forward-looking statements, whether as a result of new information, future

CurAegis Lead Engineers

- ▲ Matt Kenyon - Director of Technology - CURA Division
- ▲ Blair Anderson - CURA Embedded Systems Engineer
- ▲ Josh Jones - CURA Hardware Engineer
- ▲ Colin Payne-Rogers - Senior Mathematician

The CURA Cycle

1

The **myCadian Guardian Watch** collect individual's physiological data.



3

The **Z-Coach Wellness Program** trains users to enhance sleep, alertness, efficiency and safety.



5

Optional: Individuals and management can agree to use de-identified data to analyze specific operational issues.

2

Algorithms analyze data and provide real time alertness score, **CURA Score**; a 10-point alertness scale



4

Track sleep and alertness plus continuous monitoring of steps, heart rate and calories burned.

Current Vitals 6.5 07h 16m 61.64 1,987

CURA Algorithm

myCadian Watch

The CURA algorithms have been calibrated against validated data collected in labs

Actigraphy of the myCadian watch has been validated against PSG, compared to the Actiwatch

PVT



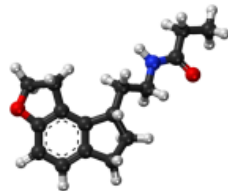
Math Test

$$\begin{array}{l} 2 > -3 \\ 0.999\dots = 1 \\ \pi \approx 3.14 \\ \sqrt{2} \\ 1 + 2 \cdot 3 \\ 5^2 \\ (1 - 2) + 3 \\ 5(2 + 2) \\ 101_2 = 5_{10} \end{array}$$

KSS



Melatonin



Validated by
SCIENCE



PSG



ActiWatch 2

